

Opticooler® Temperature. That arrives. Quick Reference

(New screen)



Version

Issued by	Released by
Martin Köhnke	Christine Hartmann

Version	Issue Date	Revision
1.0	07. June 2023	All Pages

DoKaSch TEMPERATURE SOLUTIONS GmbH

Mönchhofallee 7 | 65451 Kelsterbach | Germany

Phone: +49 6142 836 938-0 | Telefax: +49 6142 836 938-99

info@dokasch-ts.com | www.dokasch-ts.com

This “Quick Reference Handbook” does not replace the Operations Manual. Please, do also read and follow the Operations Manual. Leading is always the Operations Manual in its latest edition.

Download at www.dokasch-ts.com/en/downloads/

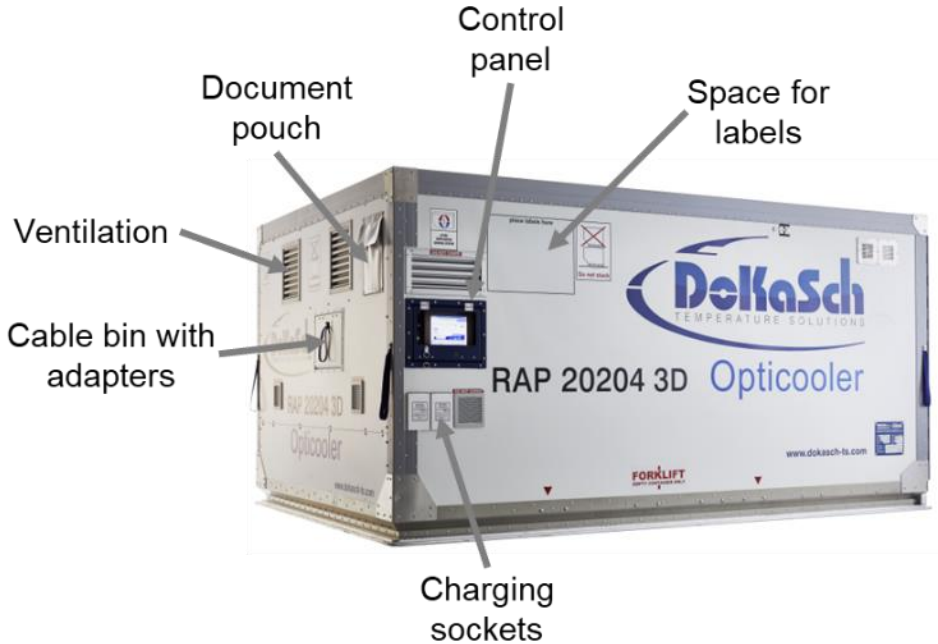
Table of content

Version	2
Overview & Familiarization	4
RAP Details	4
Left / Back side.....	4
Front view.....	4
Air circulation.....	5
RKN Details	5
Left / Back side.....	5
Door open	6
Air circulation.....	6
Using the Opticooler	7
Step 1: Outside Walkaround Check	7
Step 2: Switch on.....	7
RAP and RKN Control Panel	7
Battery Charging	8
Screen Display while Charging.....	8
Step 3: Select the Temperature program and Pre-conditioning:.....	9
Step 4: Loading the Goods	10
Secure your Cargo	10
Step 5: End of transport, program end	11
Alerts & Alarms.....	11
Troubleshooting:	11
Important Information for Active Shipments.....	12
During Preparation:.....	12
During Live Shipment:.....	12
Contact us	12

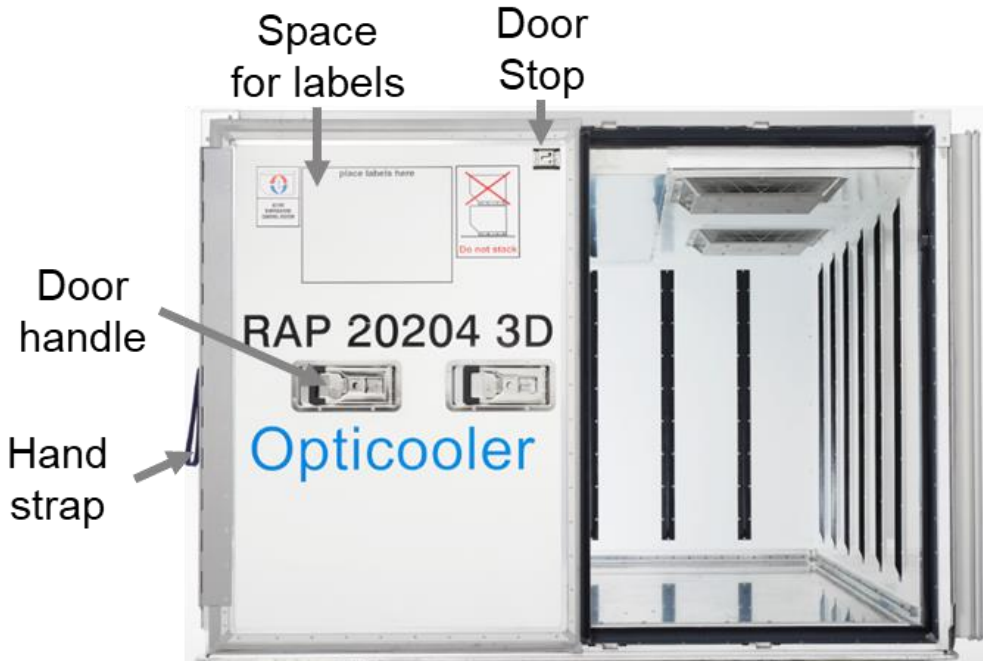
Overview & Familiarization

RAP Details

Left / Back side



Front view



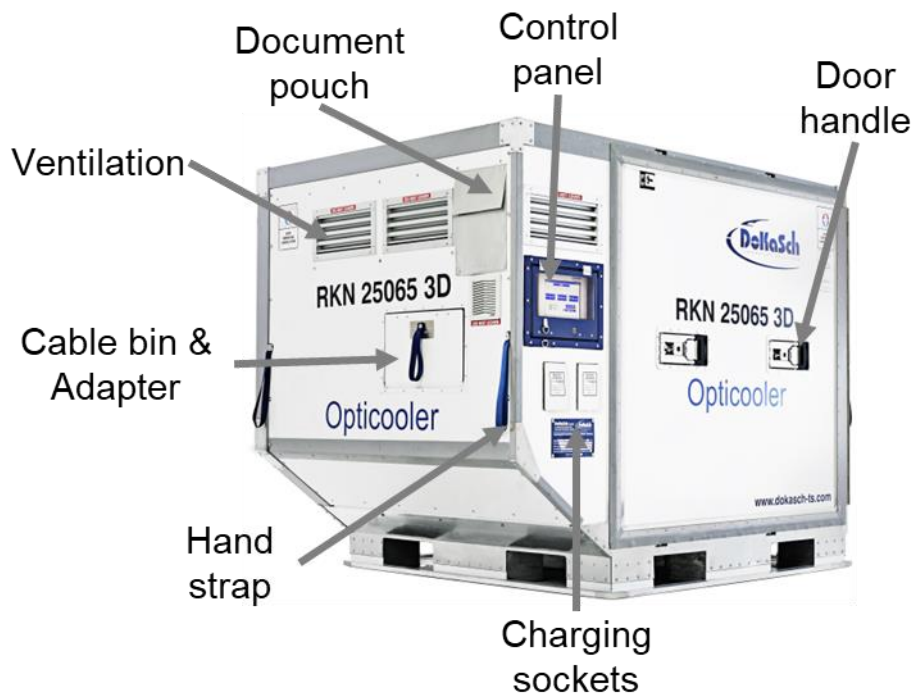
Air circulation

Four fans ensure an even airflow for constant temperature control. Air is being sucked out at the bottom of the rear wall.



RKN Details

Left / Back side



Door open



270° door opening

Air circulation

Three fans are ensuring an even airflow for constant temperature control. Air is being sucked out at the bottom of the side wall.



Using the Opticooler

Step 1: Outside Walkaround Check

- ✓ No physical damages (see “wear and tear description”)
- ✓ Both charging cables are available and plugged in
- ✓ Cargo compartment is clean
- ✓ Door(s) can be closed properly

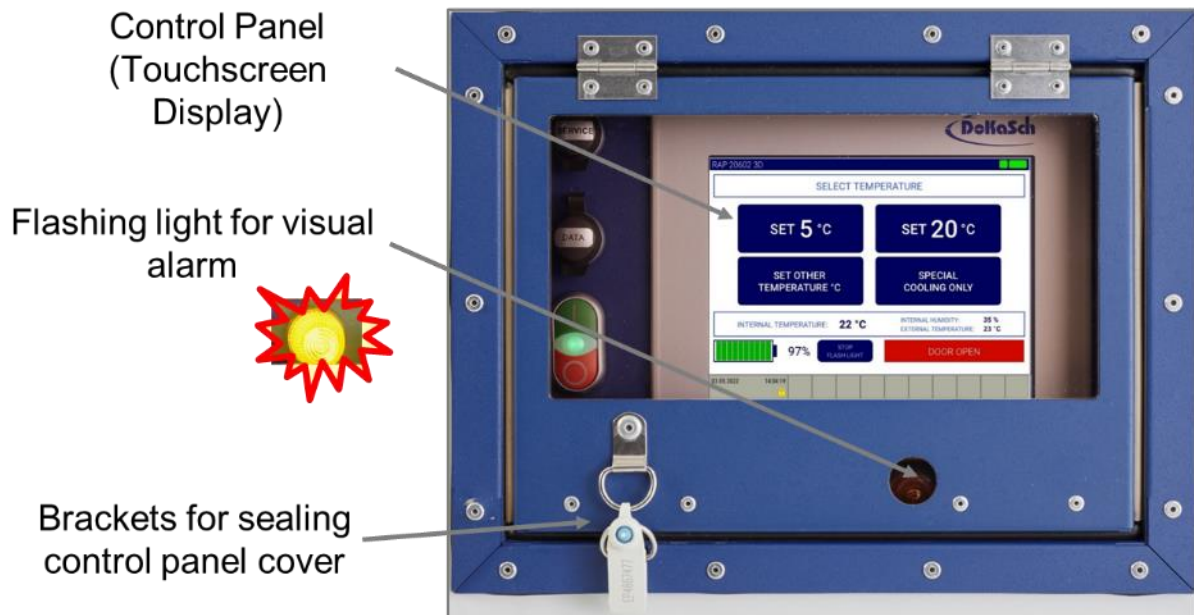
Step 2: Switch on

The container is usually switched off when delivered. To start, press the green button

- ✓ Green light indicates that the container is running
- ✓ Control-unit boots now (approx. 60-120 sec.)
- ✓ „Start screen“ appears and the container is ready for operation, without active program
- ⚠ Do not switch off the container as long as the „start screen“ is not being fully displayed.



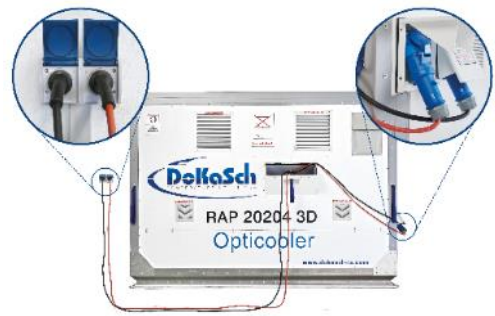
RAP and RKN Control Panel



Note: While the container is switched on, screen is continuously on (no screen saver)

Battery Charging

- ✓ Container is equipped with two charging units and two sockets
- ✓ Plug in one end at the container and the other end at the mains power of the warehouse (110 – 220 V).
- ✓ It is possible to use just one cable or both in parallel (DoKaSch-TS recommends using both). Charging time up to 4 hours (with both cables)
- ✓ The battery charges the fastest **using two cables** at an outside temperature between +15 °C and +20 °C. Higher or lower ambient temperature lead to longer charging times.
- ✓ Cables are five meters long (black/red) and local extensions can be used
- ✓ Fixed cables: Type-F: Europe (except UK and Ireland)
- ✓ The container is equipped with four adapters (2ea per type):
 - Type B: USA, Canada, Mexico, Japan
 - Type G: UK, Ireland, Malta, Malaysia, Singapore
 - Type J: Switzerland, United Arabian Emirates
 - Type I: China, Australia, New Zealand, Argentina



- ⚠ Monitor charging status frequently
- ⚠ Do not use damaged cables
- ⚠ Before charging the container, always check the power cables and their sockets (both ends of the cable) at the container for visible damages (e.g. damaged isolation, ripped out sockets)

Screen Display while Charging

- ✓ Ensure that the notification „charging“ and/or the lightning symbol are displayed.
- ✓ Monitor the charging status. If battery capacity does not increase, inform your supervisor.



Step 3: Select the Temperature program and Pre-conditioning

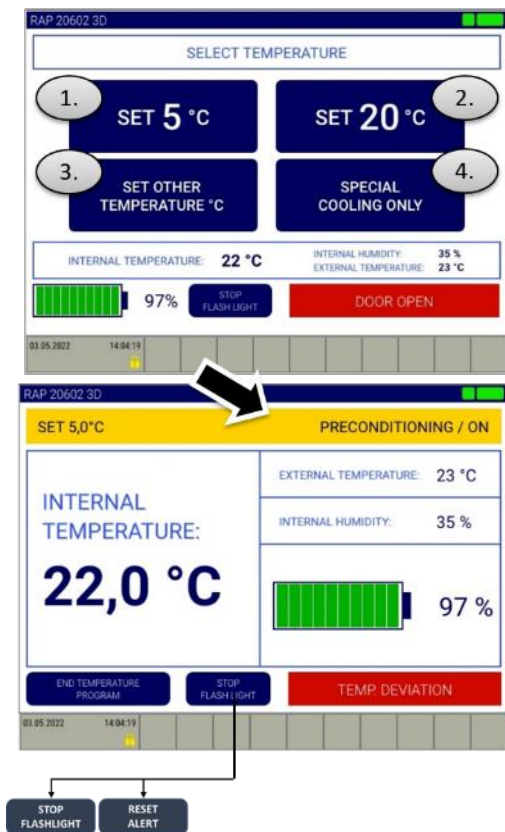
Press the relevant button to select one temperature program:

1. Set 5°C: for +2 to +8°C requirement
2. Set 20°C: for +20 to +25°C requirement
3. Set Other Temperature °C: individual choice, between +2 and +30°C (range +/-3°C)
4. Special Cooling only: Will only cool cargo bay to remain below +8°C. Heating function will be disabled.

Once the program is selected the Pre-conditioning starts automatically.

Note: If the internal temperature is out of the selected range:

- Top bar will appear in Yellow, turning green once in range (example, +2 to +8C for “Set 5°C”)
- Temperature deviation alarm will show on the screen and the yellow strobe light will start



Note: You can stop the yellow flashing light by pressing “Stop Flashlight”

- ⚠ During Pre-conditioning, keep the unit plugged to the mains power.
- ⚠ Keep the doors closed during preconditioning, to avoid humidity entering the container!

Step 4: Loading the Goods

Check that the unit is in the selected temperature range before loading the goods.

- ✓ Loading the goods will trigger at least the “door open” alarm (Yellow Flashing Light is triggered, Alarm is displayed on the screen).

More details under [“Alerts & Alarms”](#)

Note: After loading in the goods, flashing light and alarms (door open/temperature deviation) will need to be reset by pressing the “Stop FlashLight” / “Reset Alert” button on the screen.



- ⚠ Doors are to be kept closed. Only open for swift loading process.
- ⚠ Goods must be pre-conditioned exactly. Goods temperature deviation shall not deviate more than plus/minus 0,5°C from the set temperature. Larger deviations reduce the running time of the battery significantly. The container is not designed to cool down or heat up cargo on battery.

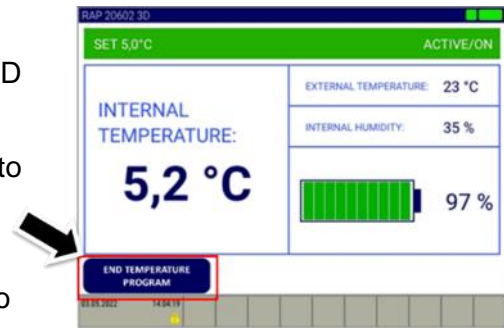
Secure your Cargo

Payload can be tied down by straps at six points on all four sides. Method applicable to both the RAP and the RKN.



Step 5: End of transport, program end

- ✓ End program after cargo has been removed from the container and the container is empty
- ✓ The next screen will request you to confirm „END PROGRAM“ by pressing **“YES”**
- ✓ Close the doors and recharge the container up to 100% and switch it off afterwards
- ⚠ Charge the batteries and switch off the container afterwards. This will avoid damages to the equipment, in particular to the batteries.



Alerts & Alarms

Following will trigger Alerts & Alarms

1. Temperature deviation
2. Low battery (below 20%)
3. Door open

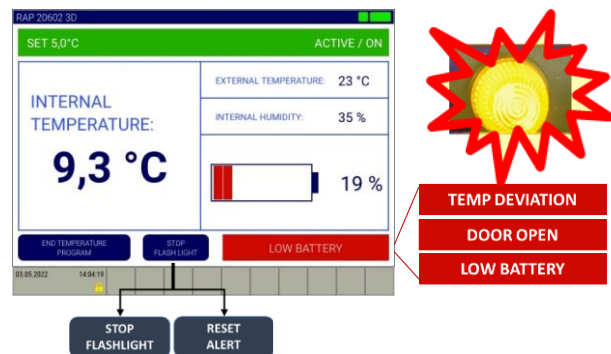
Yellow strobe light starts flashing and alarm is displayed on the screen.

If so,

1. Press “stop flashlight”
2. If the cause has been solved (doors closed, temperature in range), you can “reset alert”.
3. Ensure all alerts have been quitted before sealing the display cover.

- ⚠ Live shipments need your immediate action

Note: If the control panel cover is sealed you will not be able to stop/quit the Flashlight



Troubleshooting:

1. **Temp. Deviation:** Move the container into an environment which is closer to set temperature (example a warehouse away from weather extremes). Inform your supervisor immediately!
2. **Low battery:** Plug in the container immediately and ensure that the container is charging.
 - ⚠ Make sure cables are plugged in to the container sockets (see [External Power / Battery Charging \(110 – 220 V\)](#)) as well as in your wall plug. If using only one cable, check that the same-colored cable is in both sockets. Plug in the container immediately and ensure that the container is charging
3. **Door Open:** check doors and ensure they are closed properly
 - ⚠ Do NOT break a seal of a live shipment

Important Information for Active Shipments

During Preparation

- ⚠ Cargo must be loaded on pallets in a way that a free airflow is ensured:
 - Throughout pallet itself in all directions
 - Between the spacers at all sides
 - At the air inlets and the air outlets
 - If the cargo on the pallet is shrink-wrapped, keep the pallets itself totally clear from any foil or carton
- ⚠ Avoid cold traps when packing the cargo
- ⚠ „IATA Dangerous Good Regulations“ must be met strictly
- ⚠ Secure the cargo (unwanted shifting) with airline approved straps at the tie-down
- ⚠ Observe the max. weight restrictions
- ⚠ Avoid loose foil, cartons, etc. that can block the ventilators
- ⚠ Keep doors closed except for loading/unloading to minimize humidity inside the unit.

During Live Shipment

- ⚠ Do NOT open doors
- ⚠ Do NOT end or change temperature program
- ⚠ Do NOT switch off the container, while goods are loaded
- ⚠ Reduce exposure to direct sunrays to the greatest possible extend
- ⚠ Move the container to an environment which is close to the set temperature
- ⚠ Charge whenever possible. Use both cables to secure the best charging level.
- ⚠ Do NOT harm the isolation; Handle the container with care to avoid physical damages.

Contact us

24/7 Hotline for urgent operational issues:

Phone: +49 6142 836 938-11
E-Mail: help@dokasch-ts.com

Availability checks, rental requests and bookings shall be addressed to DoKaSch-TS at normal business hours (Mo.-Fr. 09:00 – 17:00 LT-FRA):

E-Mail: request@dokasch-ts.com
Phone: +49 6142 836 938-12
Fax: +49 6142 836 938-99
Address: DoKaSch TEMPERATURE SOLUTIONS
Mönchhofallee 7
65451 Kelsterbach
Germany