

Temperature. That Arrives.

Opticooler RAP (LD9)

- Active, battery powered
- No dryice
- Data recording
- Minus 30 to plus 50°C outside temperature.



The **Opticooler** is a high-end climate solution for pharmaceuticals. Battery powered, it can cool as well as heat, and requires no dryice at all.

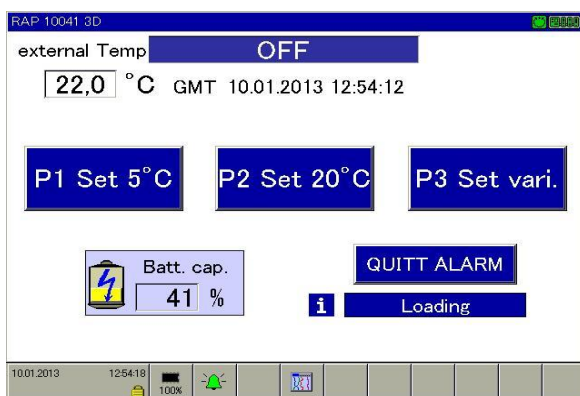
With its very large battery capacity, highly advanced compressor technology and integrated CPU, the **Opticooler** maintains constant interior temperature with high accuracy, provided batteries are charged or the unit is connected to mains power (110 V / 220 V). The battery charging time is approx. 4-6 hours

The cargo compartment as well as various metrics are continuously and tamper proofed recorded and provides the customer with a complete transport history.

Alerts, e.g. open doors and others, are being displayed and recorded up to 1 year.

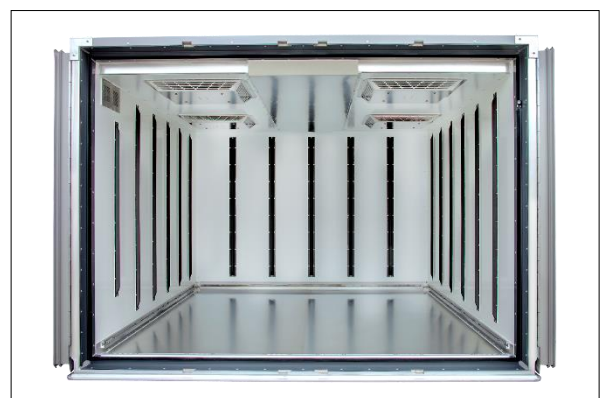
Critical components are installed with quadruple redundancy.

■ Safe operation



User-friendly touchscreen control panel for fast and easy handling

■ Optimised cargo compartment



The cargo compartment has a loading height of 1,320 mm (51.9 in), providing space for 5 euro pallets.

DoKaSch TEMPERATURE SOLUTIONS GmbH
Mönchhofallee 7, 65451 Kelsterbach, Germany

phone: +49 (0) 6142 836 938 - 0
fax: +49 (0) 6142 836 938 - 99
info@dokasch-ts.com - www.dokasch-ts.com



Opticooler RAP (LD9)

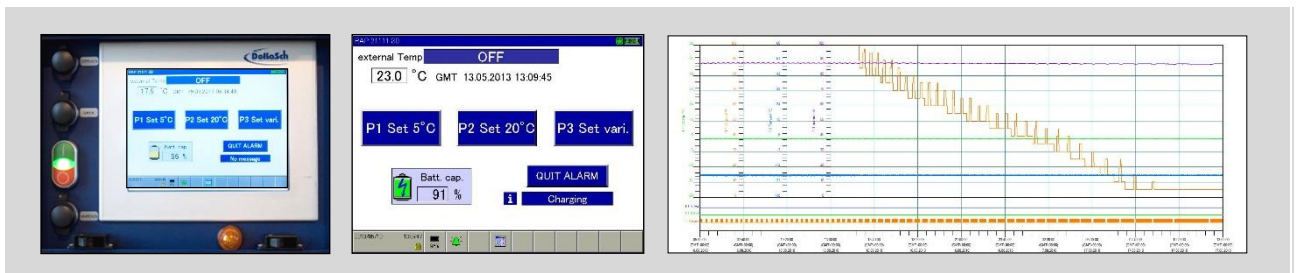
Temperature. That Arrives.

Simple to operate

P1: Set Point 5°C	+2°C to +8°C	+35.6°F to +46.4°F
P2: Set Point 20°C	+15°C to +25°C	+59°F to +77°F
P3: freely selectable	+2°C to +30°C	+35.6°F to +86°F

The **Opticooler** gives the customer the choice of selecting between 3 presets, P1, P2 and P3.

Permanent data recording



All data including alerts are recorded tamper proofed from the start to the end of the operation

**subject to technical changes*

Technical Data*	RAP (LD9)	
Set temperature range	+2°C to +30°C	+35.6°F to +86°F
Ambient temperature range	-30°C to +50°C	-22°F to +122°F
External dimensions (L x W x H)	3,175 x 2,235 x 1,615 mm	125 x 88 x 63.6 in
Internal dimensions (L x W x H)	2,500 x 2,063 x 1,334 mm	98.4 x 81.2 x 52.5 in
Max. internal loading dimensions (L x W x H)	2,460 x 2,023 x 1,320 mm	96.8 x 79.6 x 52 in
Loading volume, effective	6.57 m ³	232 cu. ft
Tara weight	1,140 kg	2,514 lb
Gross weight	6,033 kg	13,300 lb
Net weight, max.	4,893 kg	10,787 lb
Power supply	operated by 24 V airworthy accumulators ground systems 110 / 220 V connectors	
Accumulator load time (0-100%)	approx. 4 h	
Autonomous running time	approx. 100 h	

DoKaSch TEMPERATURE SOLUTIONS GmbH
Mönchhofallee 7, 65451 Kelsterbach, Germany

phone: +49 (0) 6142 836 938 - 0
fax: +49 (0) 6142 836 938 - 99
info@dokasch-ts.com - www.dokasch-ts.com

